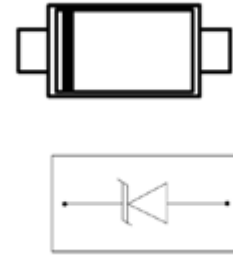


Feature

- 500W peak pulse power per line ($t_p = 8/20\mu s$)
- SOD-323 package
- Replacement for MLV(0805)
- Unidirectional configurations
- Protects one power or I/O port
- ESD protection > 40 kV
- Low clamping voltage
- RoHS compliant
- Transient protection for data lines to IEC 61000-4-2(ESD) $\pm 15KV$ (air), $\pm 8KV$ (contact); IEC 61000-4-4 (EFT) 40A (5/50ns)
IEC 61000-4-5(surge): 24A, 8/20 μs -Level 2(line-ground) & Level 3(line-line)



Applications

- Laptop computers
- Cellular phones
- Digital cameras
- PDAs

Electrical characteristics per line@25°C (unless otherwise specified)

Parameter	Symbol	Conditions	Min.	Typ.	Max.	Units
Reverse stand-off voltage	V_{RWM}				5	V
Reverse Breakdown voltage	V_{BR}	$I_t = 1mA$	6			V
Reverse Leakage Current	I_R	$V_{RWM} = 5V$ $T=25^\circ C$			1	μA
Clamping Voltage	V_C	$I_{PP} = 1A$ $t_p = 8/20\mu s$			9.8	V
Clamping Voltage	V_C	$I_{PP}=42A$ $t_p = 8/20\mu s$			14.5	V
Junction Capacitance	C_j	$V_R=0V$ $f = 1MHz$		300		pF

Absolute maximum rating @25°C

Rating	Symbol	Value	Units
Unidirectional Peak Pulse Power ($t_p=8/20\mu s$)	P_{pp}	500	W
Operating Temperature	T_J	-55 to +150	$^\circ C$
Storage Temperature	T_{STG}	-55 to +150	$^\circ C$

Typical Characteristics

FIGURE 1
PEAK PULSE POWER VS PULSE TIME

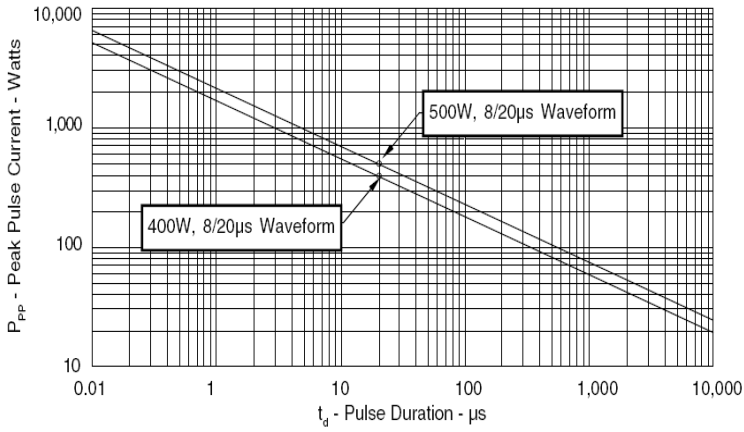


FIGURE 2
PULSE WAVEFORM

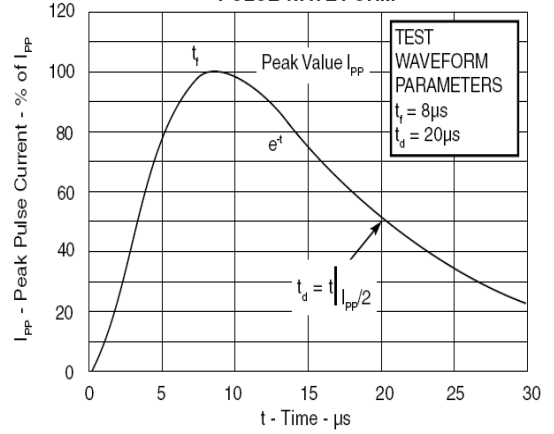


FIGURE 3
POWER DERATING CURVE

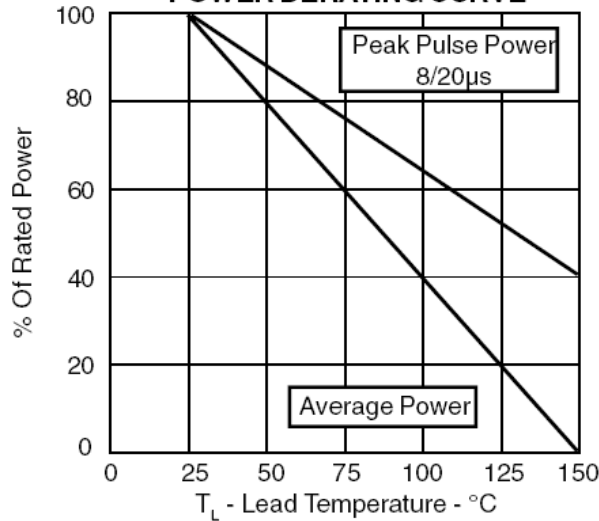
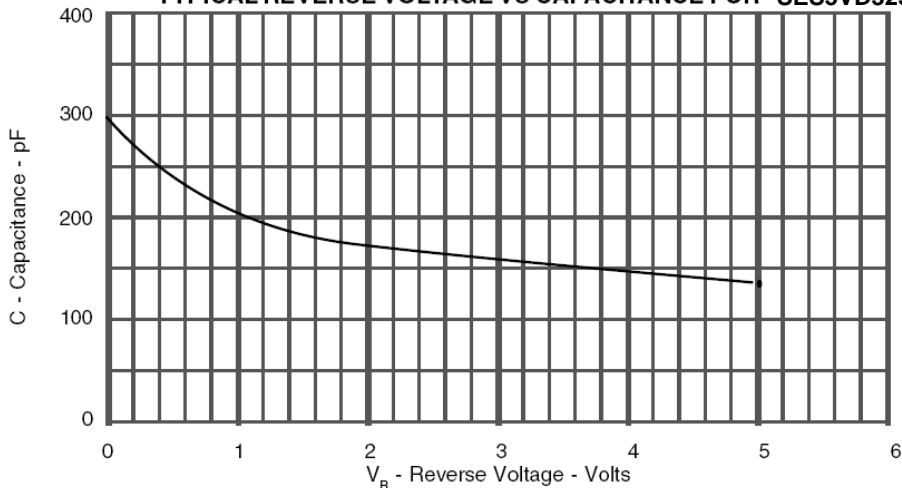
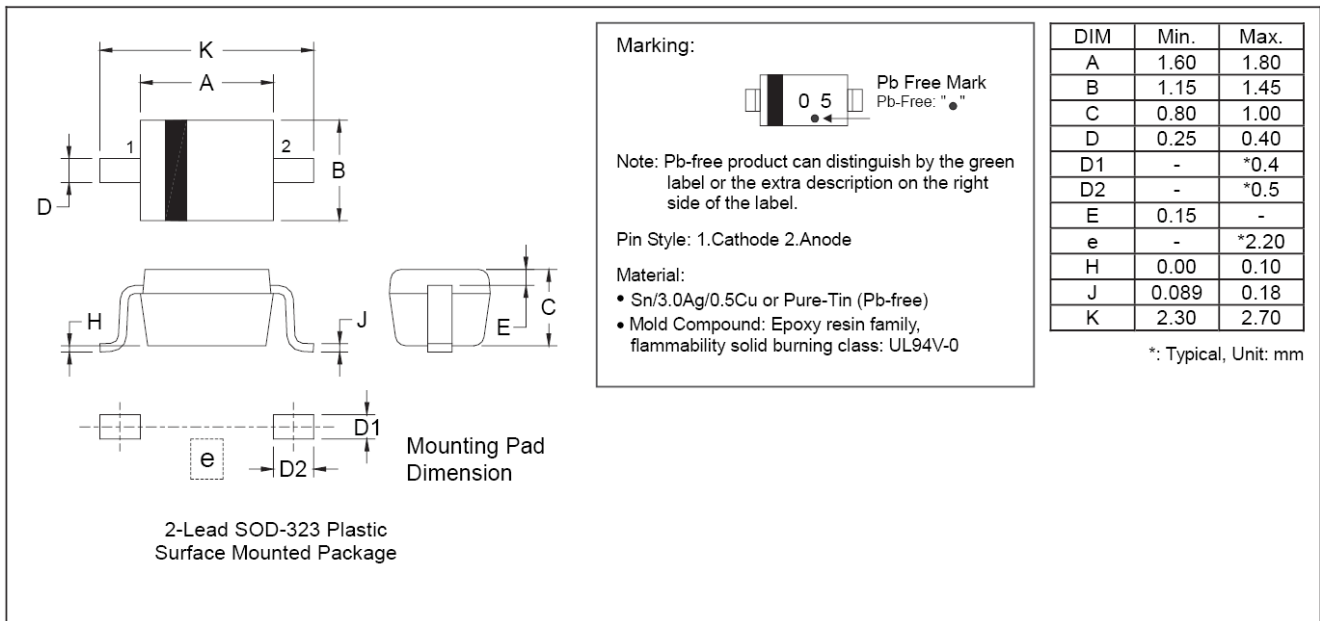


FIGURE 4

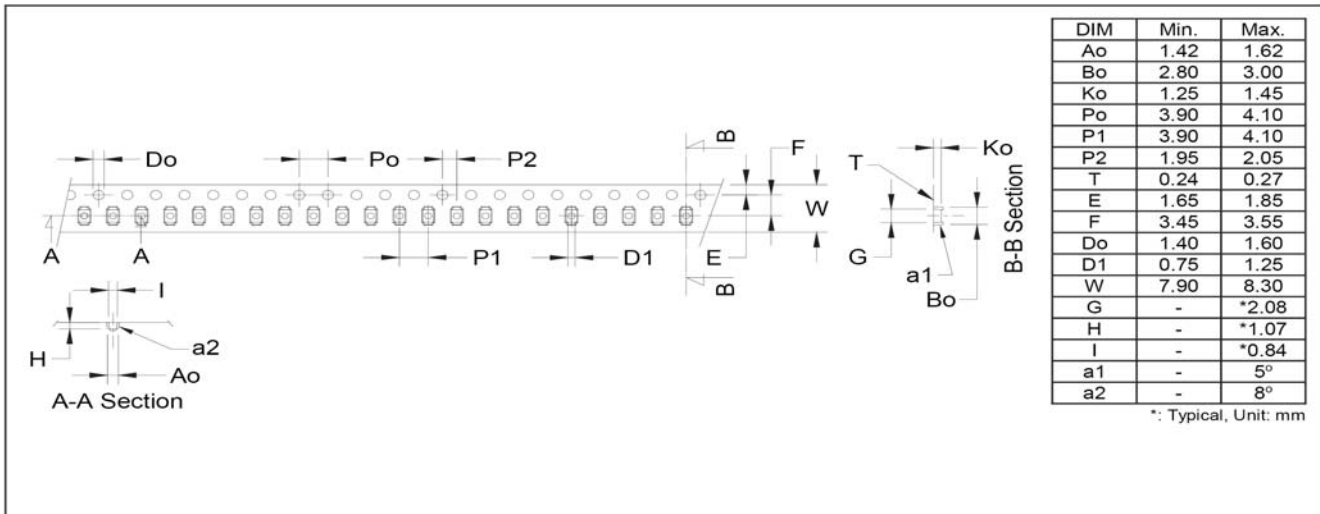
TYPICAL REVERSE VOLTAGE VS CAPACITANCE FOR SES5VD323-2U



Product dimension and pad size



Carrier size



Revision History

Revision	Date	Changes
1.0	2008-7-3	-